

BRENHAM
979-836-8532

BELLVILLE
979-274-8484

ROUND TOP
979-378-8778

HODDE



HREC #5451

REAL ESTATE CO.

FARM & RANCH
APPROX. 73.123 AC.



5P RANCH
AUSTIN COUNTY, TEXAS

H O D D E R E . C O M

5P RANCH



Secluded 73+ Acre Hilltop Retreat on Dogwood Creek

Nestled atop a private hill surrounded by 73+ wooded acres, this exceptional property offers peace, privacy, and endless possibilities. A maze of scenic trails winds through mature timber, leading to the fork of Dogwood Creek where sandy soil and tranquil waters create the perfect natural escape. The main residence is a barndominium-style lodge featuring spacious living areas, multiple bedrooms—including a cozy bunkroom for guests—and a full bar for entertaining. Relax year-round on the large screened porch or enjoy breathtaking sunsets from the outdoor BBQ terrace overlooking the hills. For the craftsman or hobbyist, the property includes a fully equipped wood shop and a separate equipment shop with loft living area, providing ample space for projects, tools, and gear. Whether you're seeking a private family compound, recreational getaway, or potential event venue, this hilltop sanctuary combines rustic charm with modern comfort—offering panoramic views, abundant wildlife, and the serenity of true seclusion.

With all equipment/furnishings included in the sale, the only thing missing is you!

ASKING PRICE: \$2,950,000



5960 SCHOENAU RD.
BRENHAM, TEXAS 77833

✦ AUSTIN COUNTY
✦ BELLVILLE ISD
✦ APPROX. 73.123 ACRES

✦ EST. TAXES: 9,227.12
(PER ACAD WITH AG EXEMPTION)
✦ MINERALS: AS OF RECORD
✦ RESTRICTIONS: NO

✦ GRAVEL, COUNTY ROAD FRONTAGE
✦ EXCLUDED FROM SALE: NONE
✦ EASEMENTS: AS OF RECORD

BARNDOMINIUM



- ❖ APPROX. 4,000 SQ. FT. (PER SELLER)
- ❖ 4 BEDROOMS
3 FULL BATHS
- ❖ YEAR BUILT: 2006
- ❖ EXTERIOR: METAL
- ❖ ROOF: METAL
- ❖ FOUNDATION: SLAB

LIVING-DINING-KITCHEN



GAME ROOM/FLEX SPACE



BEDROOMS



BACK YARD - OUTDOOR KITCHEN



WORKSHOP



- ❖ UPSTAIRS LOFT AREA:
APPROX. 1,216 SQ. FT.
- ❖ DOWNSTAIRS WORKSHOP
- ❖ EQUIPMENT AREA WITH
COVERED PORCH AREA
- ❖ YEAR BUILT: 2015
- ❖ EXTERIOR: METAL
- ❖ ROOF: METAL
- ❖ FOUNDATION: SLAB

LOFT & WORKSHOP



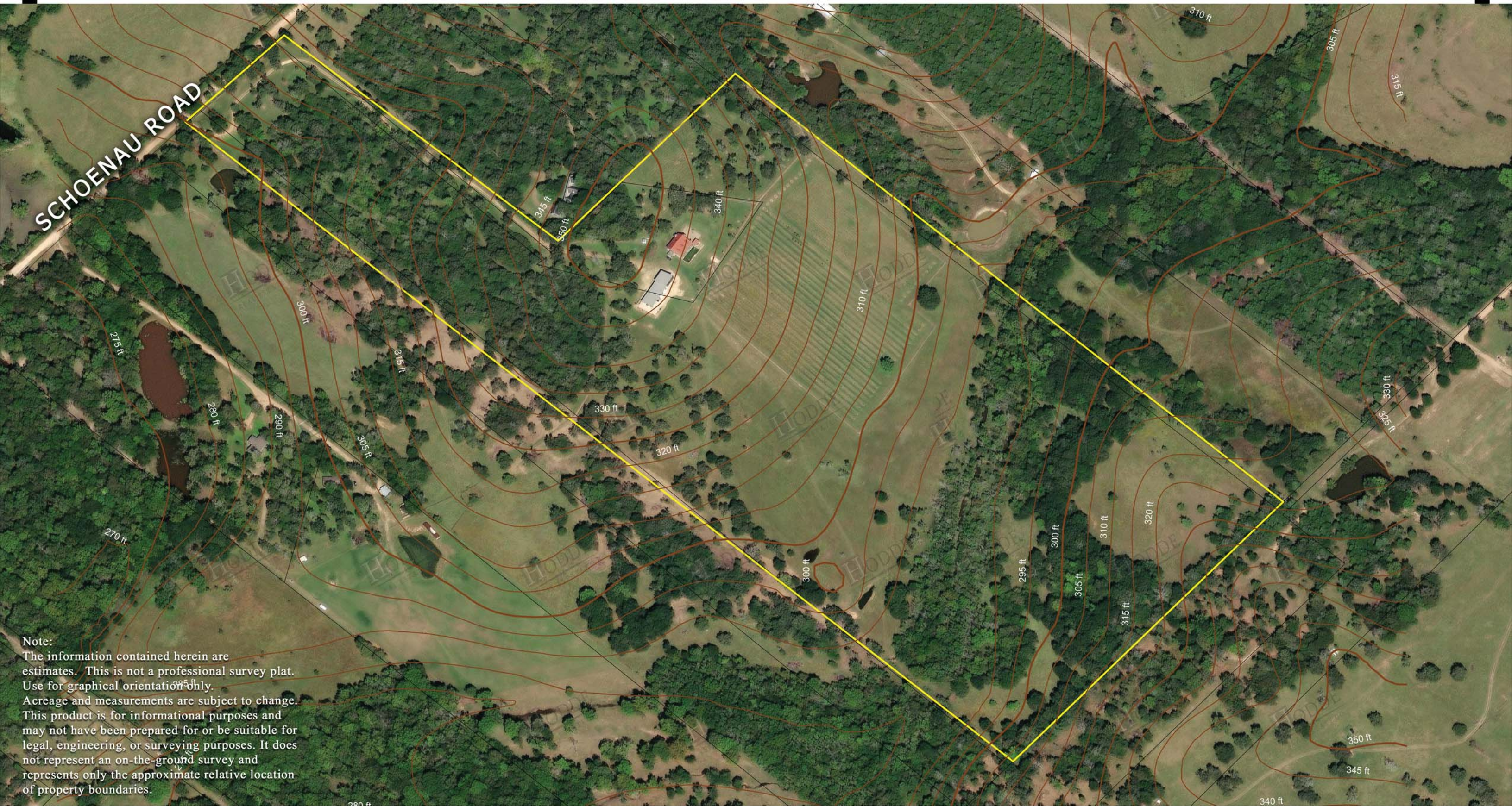
EQUIPMENT AREAS



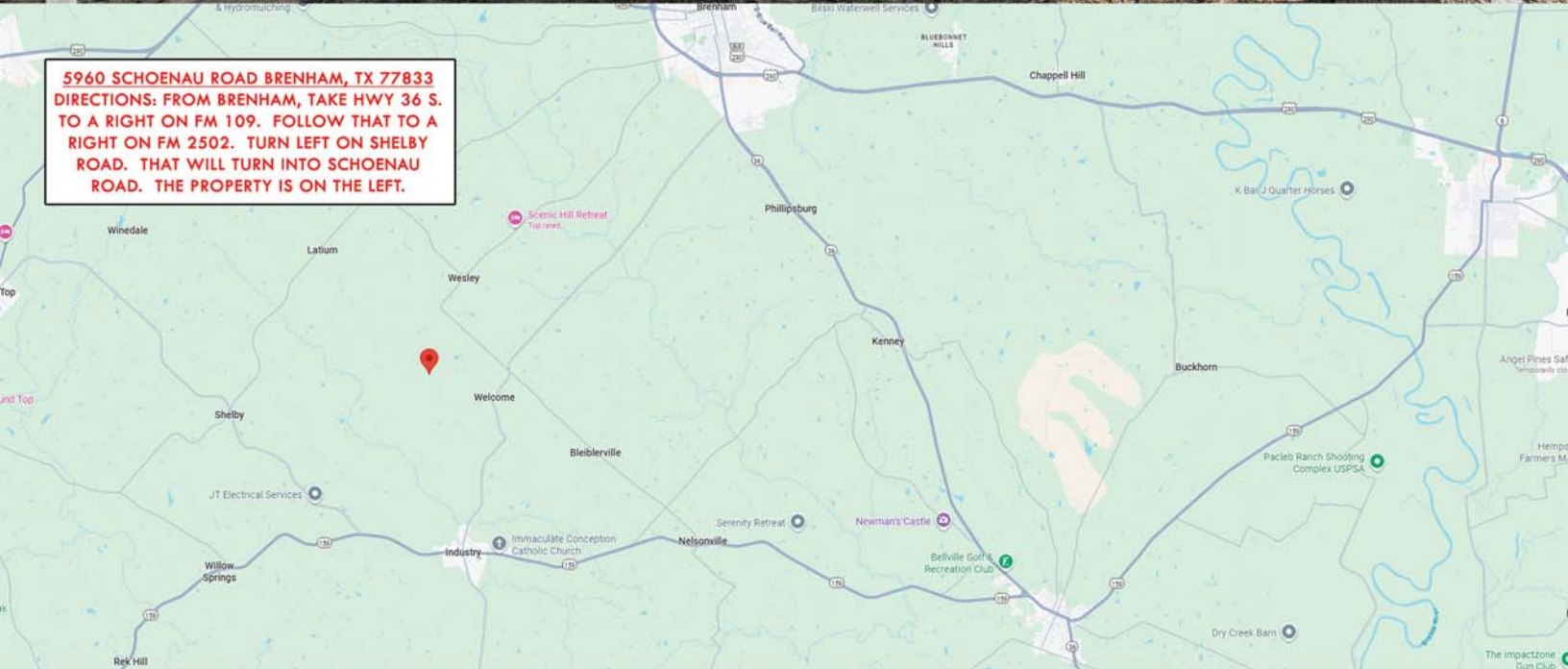
ADDITIONAL PHOTOS



AERIAL LAYOUT



Note:
The information contained herein are estimates. This is not a professional survey plat. Use for graphical orientation only.
Acreage and measurements are subject to change. This product is for informational purposes and may not have been prepared for or be suitable for legal, engineering, or surveying purposes. It does not represent an on-the-ground survey and represents only the approximate relative location of property boundaries.



The information contained herein has been obtained from sources that Hodde Real Estate deem reliable; however, cannot guarantee its accuracy. Property is subject to prior sale or withdrawal from the market.



RANDY HODDE
979-203-7050

HODDE
REAL ESTATE CO.