

BRENHAM
979-836-8532

BELLVILLE

ROUND TOP
979-378-8778



HREC #2060

RESIDENTIAL
APPROX. 0.15 AC.



401 E. ALAMO STREET
BRENHAM, TEXAS

H O D D E R E . C O M



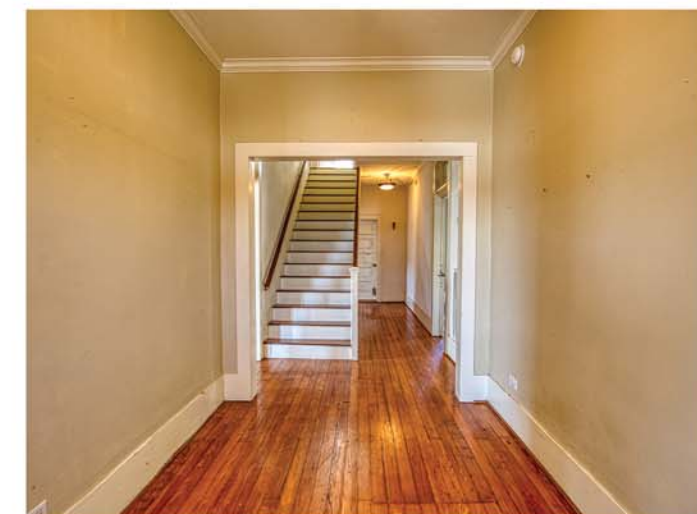
This charming, older home is perfectly situated just one block from the heart of downtown Brenham, offering the ideal combination of convenience and character. Enter through the inviting foyer. The home features original wood floors, classic door transoms, and a spacious layout. You'll find two cozy bedrooms on the main floor, with a third bedroom upstairs for added privacy. The home also has two full bathrooms, one on each floor. The large living/dining area makes for a flexible living space. The kitchen is ready for your personal touch, and the utility room at the back door adds convenience. Take advantage of the extra storage space on the second floor. Enjoy relaxing on the covered front porch with a charming porch swing. The home has a one-car garage. The manageable 0.15-acre yard is perfect for easy maintenance. Because of the property's location, and that it has been leased in the past, it is ideal for a short-term or long-term rental possibility, which adds potential for a great investment opportunity. Zoned B1 for Residential and Business Mixed. With a little T.L.C. the home can be brought back to its previous shine. Don't miss out on this fantastic opportunity in an unbeatable location!

ASKING PRICE: \$315,000



401 E. ALAMO ST.
BRENHAM, TX 77833

- ★ WASHINGTON COUNTY
- ★ BRENHAM ISD
- ★ APPROX. 0.15 AC.
- ★ EST. TAXES: \$4,922
(PER WCAD WITH NO EXEMPTIONS)

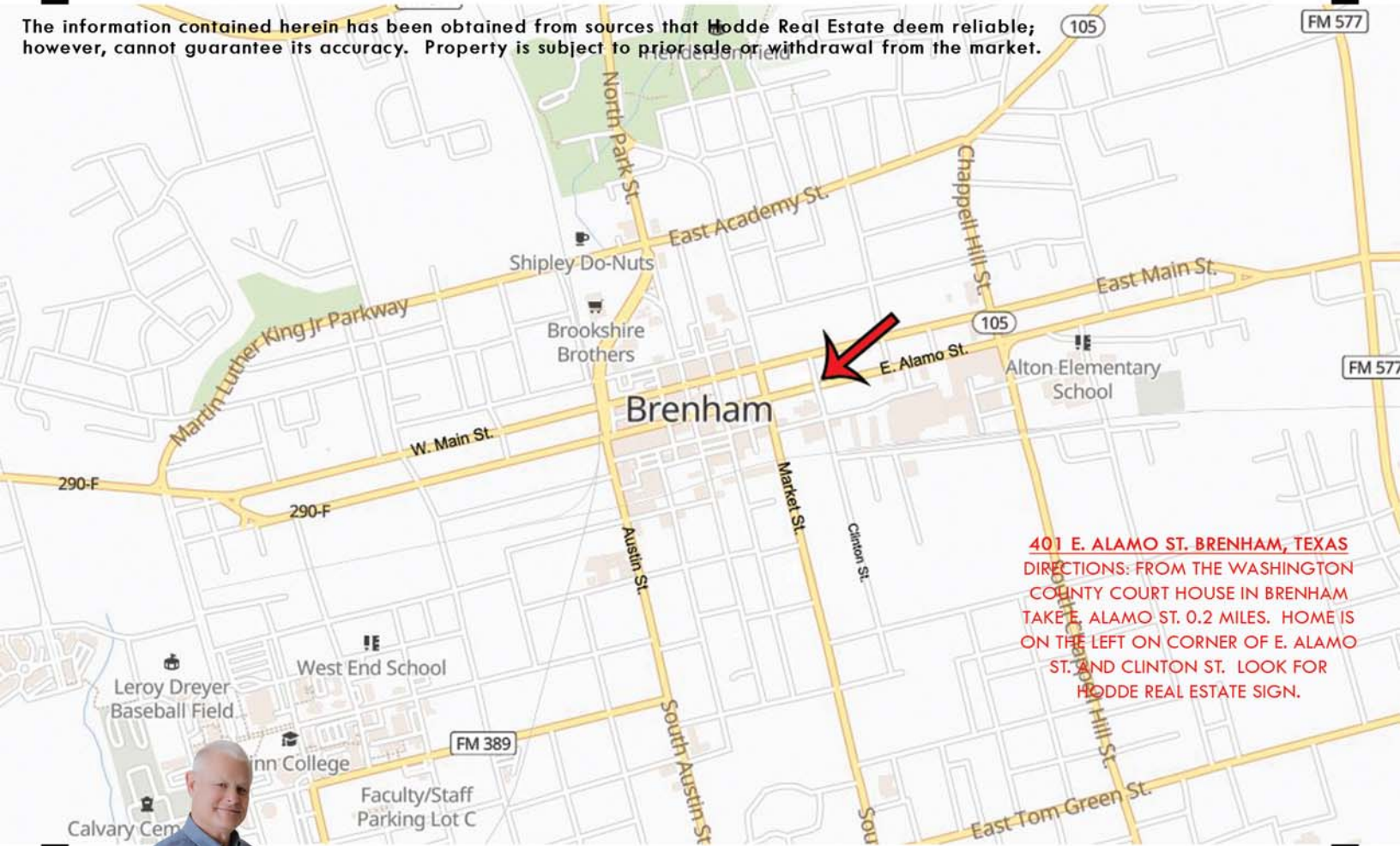


- ★ YEAR BUILT: UNKNOWN
- ★ RESTRICTIONS: CITY OF BRENHAM
- ★ SQUARE FOOTAGE: ±2,062
- ★ WATER/SEWER: CITY OF BRENHAM

- ★ FOUNDATION: PIER & BEAM
- ★ ROOF: COMPOSITION
- ★ HOA: NONE
- ★ EXCLUDED: NONE



The information contained herein has been obtained from sources that Hodde Real Estate deem reliable; however, cannot guarantee its accuracy. Property is subject to prior sale or withdrawal from the market.



401 E. ALAMO ST. BRENHAM, TEXAS
DIRECTIONS: FROM THE WASHINGTON
COUNTY COURT HOUSE IN BRENHAM
TAKE E. ALAMO ST. 0.2 MILES. HOME IS
ON THE LEFT ON CORNER OF E. ALAMO
ST. AND CLINTON ST. LOOK FOR
HODDE REAL ESTATE SIGN.



HODDE

REAL ESTATE CO.

JIM RIPPLE
979-451-2882