

112 West Main St.
Brenham, TX 77833
979-836-8532

203 N. Live Oak St.
Round Top, TX 78954
979-378-8778

HODDE



REAL ESTATE CO.

HREC #5427

FARM & RANCH
APPROX. 60.72 AC.



FOREVER VIEW RANCH
WASHINGTON COUNTY, TEXAS

H O D D E R E . C O M

FOREVER VIEW RANCH



Nestled on approx. 60.72 acres of picturesque landscape, Forever View Ranch is an extraordinary property offering unparalleled panoramic views that stretch as far as the eye can see. A true testament to luxury living, the centerpiece of this estate is a meticulously crafted custom home boasting every conceivable amenity. Step inside to the beautiful entry leading you to the formal dining room or spacious living area with a stone fireplace and large picture windows open to breakfast area and kitchen. The heart of the home is the chef's dream kitchen featuring a built-in refrigerator, stainless 6 burner range with grill and dual ovens and two large islands with bar stool space. Off the kitchen is a small media sitting area and the laundry mud room offers a walk-in pantry and full bath. Also downstairs is the primary wing featuring a sumptuous bedroom with sitting area, spa-like bathroom, and an adjacent exercise-flex room. Ascend the stairs to find a private office with three desk areas and large built-in bookshelves, offering a tranquil workspace with inspiring views. Upstairs you will find entertaining to be effortless in the expansive second living area, complete with a balcony that captures the breathtaking scenery. Three additional bedrooms and baths gives you the space you need for your family or guests. The home was designed to be low maintenance so you could enjoy every minute you are there. Outside is the back porch, where a bar and seating area invite you to relax and unwind in the serene ambiance. Cool off in the sparkling pool, complete with hot tub and cabana, perfect for lazy afternoons spent basking in the sun. As night falls, gather around the fire pit area under the starlit sky, where laughter and conversation fill the air. The property offers open pasture, perfect for hay production and/or livestock grazing, wooded area, utility barn, Live Oak trees and an abundance of wildlife. Forever View Ranch is conveniently located 15 minutes from Brenham with easy access to College Station. Come experience the epitome of luxury living with unparalleled comfort and refinement.

ASKING PRICE: \$3,950,000



➤ 2740 FLEWELLEN RD.
BRENHAM, TEXAS 77833

➤ WASHINGTON COUNTY
➤ BRENHAM ISD
➤ APPROX. 60.72 ACRES

➤ EST. TAXES: \$14,113.76 (PER WCAD)
➤ MINERALS: NONE TO CONVEY
➤ RESTRICTIONS: NO

➤ PAVED, COUNTY ROAD FRONTAGE
➤ EXCLUDED FROM SALE: NONE
➤ EASEMENTS: AS OF RECORD

CUSTOM HOME



- ❖ APPROX. 5,694 SQ. FT.
- ❖ 4 BEDROOMS
5 FULL, 1 HALF BATHS
- ❖ YEAR BUILT: 2006
- ❖ EXTERIOR: STONE
- ❖ ROOF: METAL
- ❖ FOUNDATION: SLAB

ENTRY



LIVING AREA



KITCHEN



- ❖ BUILT-IN REFRIGERATOR
- ❖ STAINLESS 6 BURNER RANGE WITH BUILT IN GRILL AND 2 OVENS
- ❖ THREE DISHWASHERS
- ❖ COFFEE BAR WITH APPLIANCE GARAGE
- ❖ BAR WITH ICE MAKER AND WINE COOLER
- ❖ HIDEAWAY OFFICE DESK SET-UP

DINING ROOM



ADDITIONAL PHOTOS



PRIMARY WING - BEDROOM, BATHROOM, FLEX ROOM & UPSTAIRS OFFICE



UPSTAIRS LIVING AREA



BEDROOMS



BACK PORCH



POOL WITH HOT TUB



BACK YARD

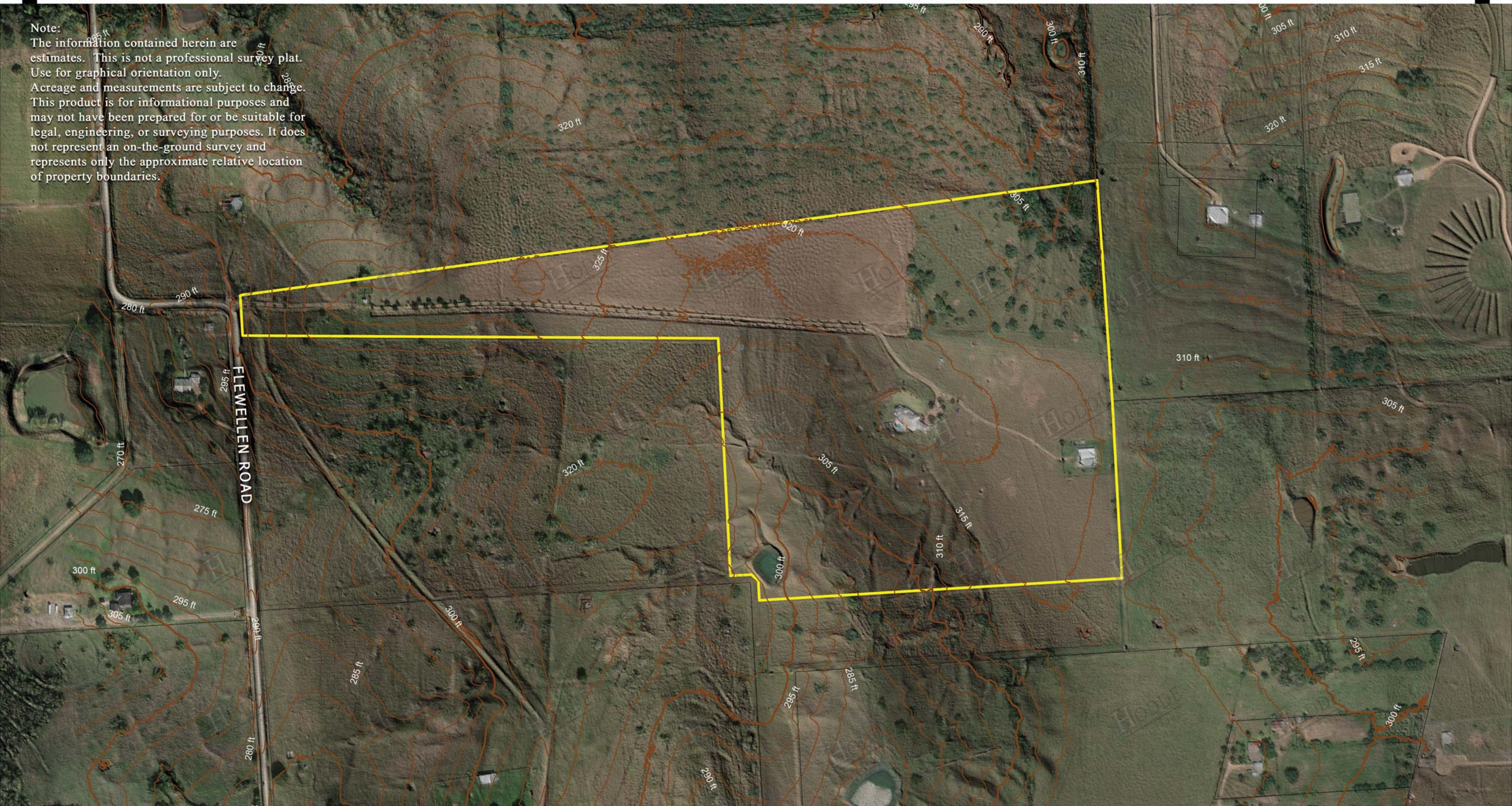


ADDITIONAL PHOTOS



AERIAL LAYOUT

Note:
The information contained herein are estimates. This is not a professional survey plat. Use for graphical orientation only. Acreage and measurements are subject to change. This product is for informational purposes and may not have been prepared for or be suitable for legal, engineering, or surveying purposes. It does not represent an on-the-ground survey and represents only the approximate relative location of property boundaries.





RANDY HODDE
979-203-7050

HODDE
REAL ESTATE CO.