

112 West Main St.
Brenham, TX 77833
979-836-8532



203 N. Live Oak St.
Round Top, TX 78954
979-378-8778

HREC #20-016

COMMERCIAL
APPROX. 2.00 AC.



VIP ROUND TOP

ROUND TOP, TEXAS

H O D D E R E . C O M



WELCOME TO VIP ROUND TOP!

This fantastic 8000+/-SF event center is strategically located on sought-after historic Hwy 237 between Paul Michael's Market Hill and Blue Hills. This property has it all: location, his & hers restrooms, kitchenette (which can be easily expanded), industrial architectural steel beam high ceilings with wood interior walls & concrete floors, climate controlled, 3 - phase power, extra capacity septic for future building, gated.

If you've been looking for a venue and/or event center in the Round Top area... this is it!

ASKING PRICE: \$2,500,000



**2260 TEXAS 237
ROUND TOP, TX 78954**

- ★ FAYETTE COUNTY
- ★ ROUND TOP/CARMINE ISD
- ★ ACREAGE SIZE: ±2.00 AC.
- ★ EST. TAXES: \$5,496

- ★ RESTRICTIONS/ZONING: NONE
- ★ ELECTRIC: BLUEBONNET ELECTRIC CO-OP
- ★ WATER: WATER WELL
- ★ SEWER: SEPTIC SYSTEM

- ★ BUILDING SQ. FT.: APPROX. 8,000 SF
- ★ EASEMENTS: AS OF RECORD
- ★ MINERALS: NONE
- ★ ROAD FRONTAGE: PAVED, STATE HWY

BUILDING INTERIOR

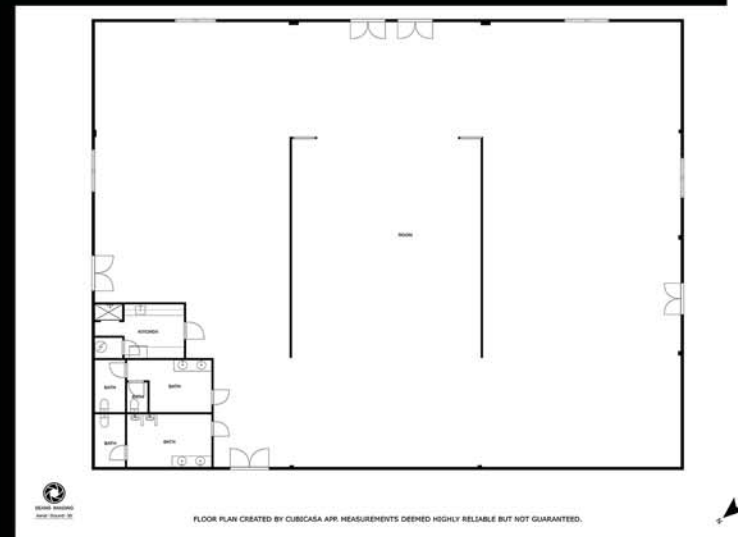


The information contained herein has been obtained from sources that Hodde Real Estate Co. deem reliable; however, cannot guarantee its accuracy. Property is subject to prior sale or withdrawal from the market.

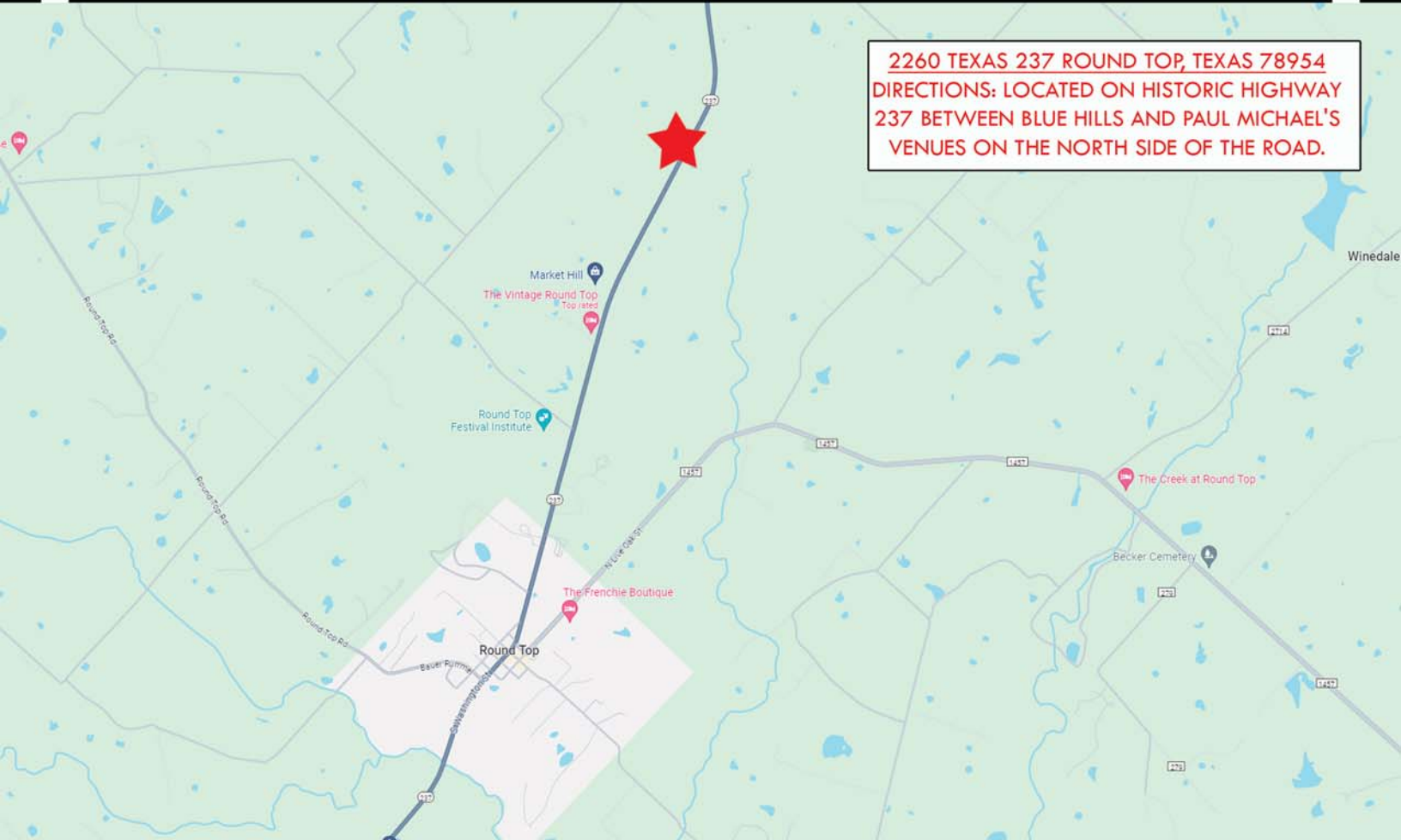
BUILDING EXTERIOR



Note:
The information contained herein are estimates. This is not a professional survey plat. Use for graphical orientation only. Acreage and measurements are subject to change. This product is for informational purposes and may not have been prepared for or be suitable for legal, engineering, or surveying purposes. It does not represent an on-the-ground survey and represents only the approximate relative location of property boundaries.



The information contained herein has been obtained from sources that Hodde Real Estate Co. deem reliable; however, cannot guarantee its accuracy. Property is subject to prior sale or withdrawal from the market.



2260 TEXAS 237 ROUND TOP, TEXAS 78954
DIRECTIONS: LOCATED ON HISTORIC HIGHWAY 237 BETWEEN BLUE HILLS AND PAUL MICHAEL'S VENUES ON THE NORTH SIDE OF THE ROAD.

The information contained herein has been obtained from sources that Hodde Real Estate deem reliable; however, cannot guarantee its accuracy. Property is subject to prior sale or withdrawal from the market.



PEG RICHARDSON
979-249-7584

BETTY MELTON
979-966-3088

HODDE

REAL ESTATE CO.

COMMERCIAL

YOUR
HOME TEAM
 FOR
 YOUR HOME TODAY