

HODDE

REAL ESTATE CO.

C O M M E R C I A L

HRE #16-059

112 West Main St.

Office 979-836-8532

Brenham, TX 77833

Toll 888-882-1321

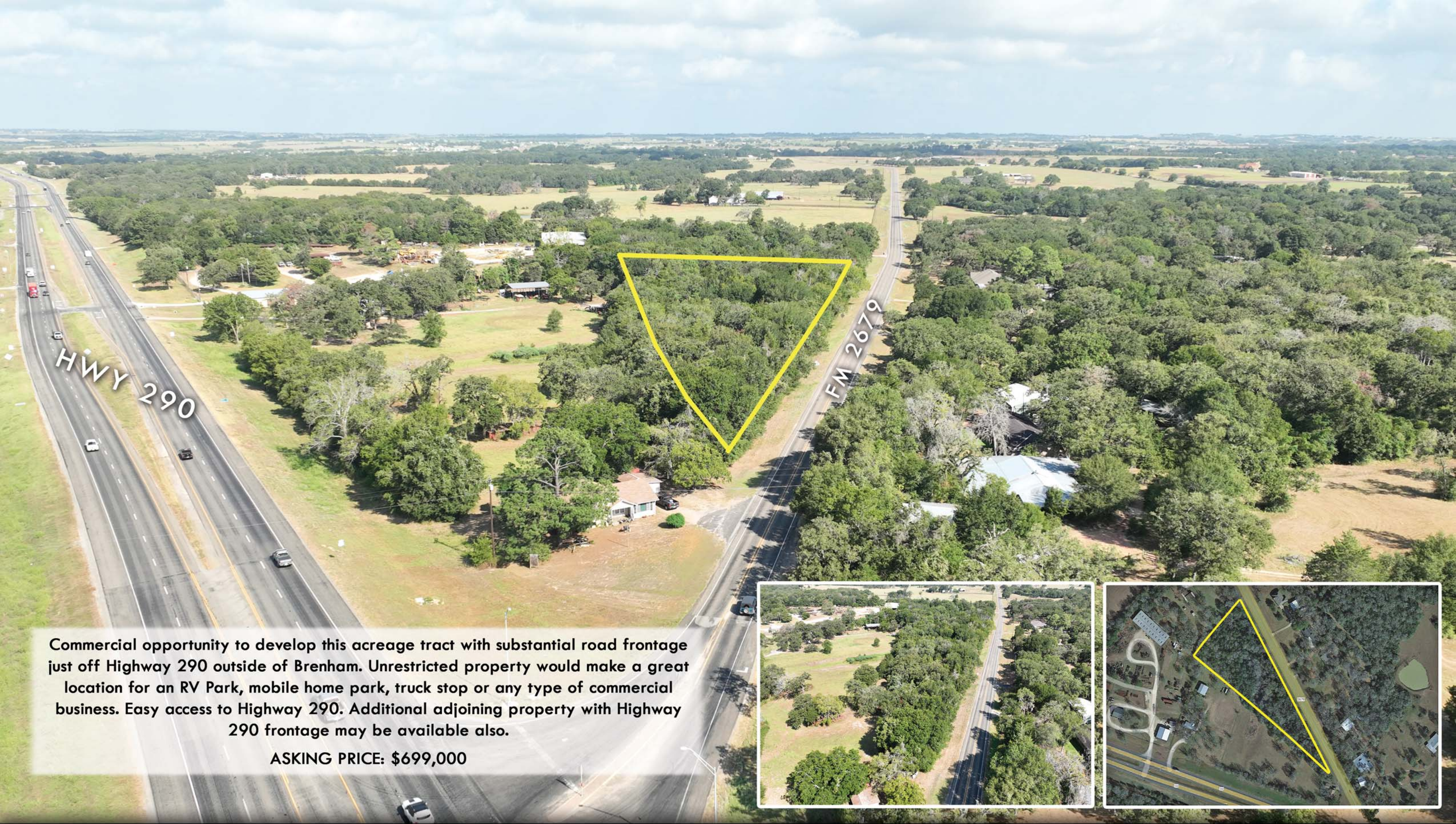
Fax 979-836-1224

**COMMERCIAL
APPROX. 4.20 AC.**



FM 2679 COMMERCIAL
WASHINGTON COUNTY, TEXAS

WWW.HODDERE.COM



Commercial opportunity to develop this acreage tract with substantial road frontage just off Highway 290 outside of Brenham. Unrestricted property would make a great location for an RV Park, mobile home park, truck stop or any type of commercial business. Easy access to Highway 290. Additional adjoining property with Highway 290 frontage may be available also.

ASKING PRICE: \$699,000

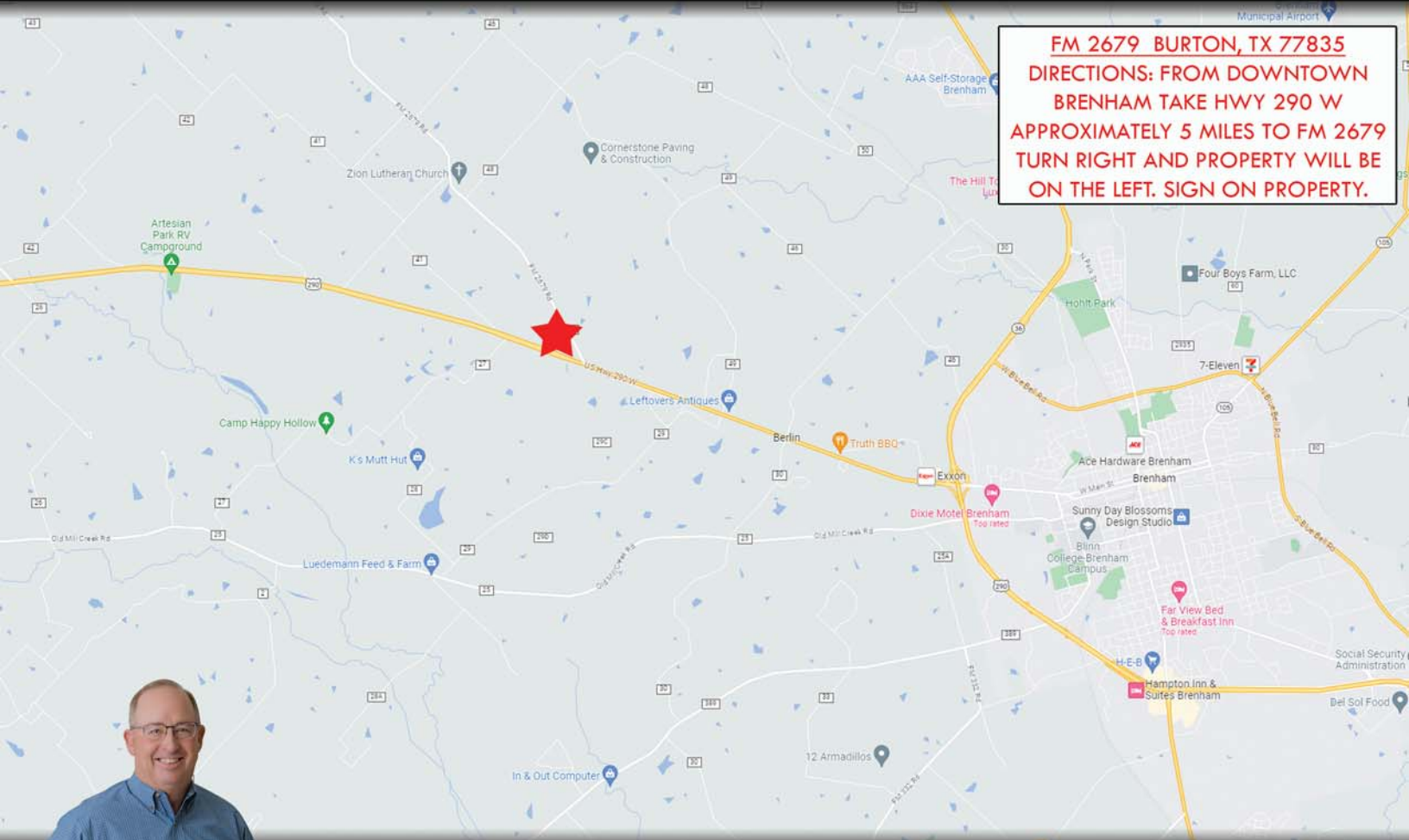


FM 2679
BURTON, TEXAS 77835

- ★ WASHINGTON COUNTY
- ★ BURTON ISD
- ★ ACREAGE SIZE: ±4.20 AC.
- ★ EST. TAXES: \$1,284

- ★ ZONING/RESTRICTIONS: NONE
- ★ SEWER: SEPTIC SYSTEM REQUIRED
- ★ WATER: RURAL WATER ALONG FM 2679

- ★ ELECTRIC IN AREA: BLUEBONNET ELEC.
- ★ MINERALS: NONE
- ★ EASEMENTS: AS OF RECORD
- ★ ±1,000' OF HWY 290 FRONTAGE



FM 2679 BURTON, TX 77835
DIRECTIONS: FROM DOWNTOWN
BRENHAM TAKE HWY 290 W
APPROXIMATELY 5 MILES TO FM 2679
TURN RIGHT AND PROPERTY WILL BE
ON THE LEFT. SIGN ON PROPERTY.



HODDE

REAL ESTATE CO.

WILLIAM "BOO" CHRISTENSEN

979-277-8426



The information contained herein has been obtained from sources that Hodde Real Estate deem reliable; however, cannot guarantee its accuracy. Property is subject to prior sale or withdrawal from the market.