

# HODDE

REAL ESTATE CO.

**C O M M E R C I A L**

HRE #3074

112 West Main St.

Office 979-836-8532

Brenham, TX 77833

Toll 888-882-1321

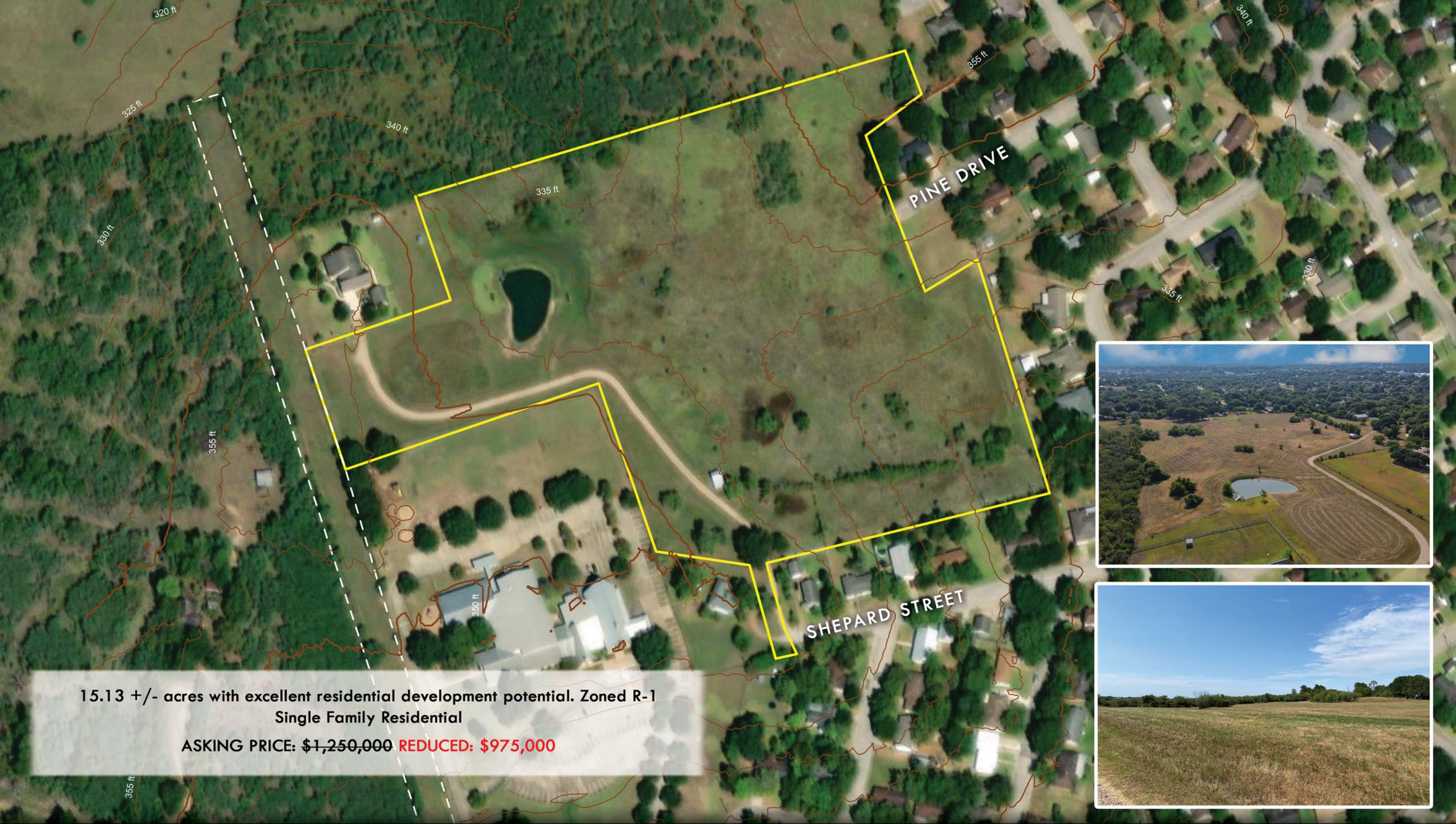
Fax 979-836-1224

**COMMERCIAL  
APPROX. 15.13 AC.**



**SHEPARD STREET COMMERCIAL**  
**BRENHAM, TEXAS**

[WWW.HODDERE.COM](http://WWW.HODDERE.COM)



15.13 +/- acres with excellent residential development potential. Zoned R-1  
Single Family Residential

ASKING PRICE: \$1,250,000 **REDUCED: \$975,000**

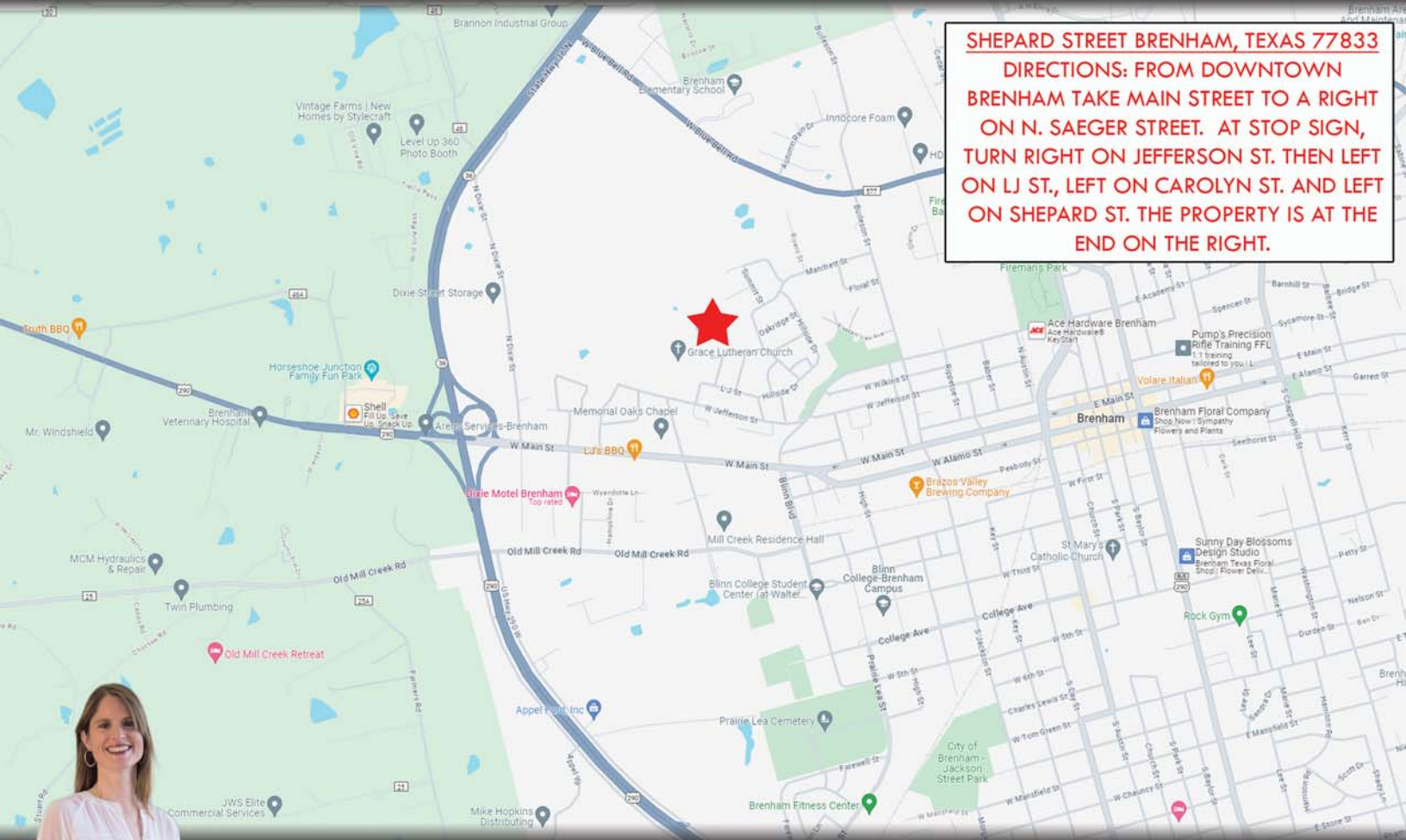


**SHEPARD STREET  
BRENHAM, TEXAS 77833**

- ★ WASHINGTON COUNTY
- ★ BRENHAM ISD
- ★ ACREAGE SIZE: ±15.13 AC.
- ★ EST. TAXES: TBD

- ★ ZONING/RESTRICTIONS: R-1  
SINGLE FAMILY RESIDENTIAL
- ★ WATER/SEWER: TO BE PROVIDED BY  
THE CITY OF BRENHAM

- ★ ELECTRIC: CITY OF BRENHAM
- ★ MINERALS: NONE
- ★ EASEMENTS: AS OF RECORD
- ★ ACCESS ON SHEPARD ST.



**SHEPARD STREET BRENHAM, TEXAS 77833**  
**DIRECTIONS: FROM DOWNTOWN BRENHAM TAKE MAIN STREET TO A RIGHT ON N. SAEGER STREET. AT STOP SIGN, TURN RIGHT ON JEFFERSON ST. THEN LEFT ON LJ ST., LEFT ON CAROLYN ST. AND LEFT ON SHEPARD ST. THE PROPERTY IS AT THE END ON THE RIGHT.**



**ASHLEY JAHNKE**  
REALTOR

**979-836-8532**



**REAL ESTATE CO.**

The information contained herein has been obtained from sources that Hodde Real Estate deem reliable; however, cannot guarantee its accuracy. Property is subject to prior sale or withdrawal from the market.