

HREC #21-003

ACREAGE  
APPROX. 55.00 AC.



# ROLLING MEADOWS RANCH

WASHINGTON COUNTY, TEXAS

**HODDE**  
REAL ESTATE CO.

979-836-8532

[WWW.HODDERE.COM](http://WWW.HODDERE.COM)

CONTACT:  
CANDACE LUBOJASKY  
[CANDACE@HODDERE.COM](mailto:CANDACE@HODDERE.COM)



# ROLLING MEADOWS RANCH

Welcome to Rolling Meadows Ranch! This expansive property offers 55 acres of picturesque land, complete with a charming pond and a house in need of renovation or removal. This serene ranch is ideal for those seeking a peaceful countryside lifestyle. The property boasts an active hay agriculture exemption, presenting an excellent opportunity for farming enthusiasts or those looking to maintain an agricultural tax exemption. The rolling meadows provide ample space for cultivating crops or grazing livestock. Imagine waking up to breathtaking views of the surrounding meadows, and overlooking the pond creating a tranquil ambiance. Rolling Meadows Ranch offers the ideal backdrop for outdoor enthusiasts, whether you enjoy horseback riding, fishing, or simply relishing the beauty of nature. Enjoy the serenity of the countryside while being conveniently accessible to nearby amenities and the local community of Burton or Brenham.

Asking Price: \$1,250,000







 **ASKING PRICE: \$1,250,000**




**7216 QUAIL RUN ROAD  
BURTON, TX 77835**

 **WASHINGTON COUNTY**

 **BRENNHAM ISD**

 **RESTRICTIONS: NO**

 **ACREAGE: ±55.00 AC.**

 **EST. TAXES: \$881** (PER WCAD WITH AG EXEMPTION)

 **MINERALS: NEGOTIABLE**

 **WATER WELL AND SEPTIC SYSTEM**

 **EASEMENTS: AS OF RECORD**

 **PAVED, COUNTY MAINTAINED  
FRONTAGE ON QUAIL RUN ROAD**

 **EXCLUSIONS: NONE**

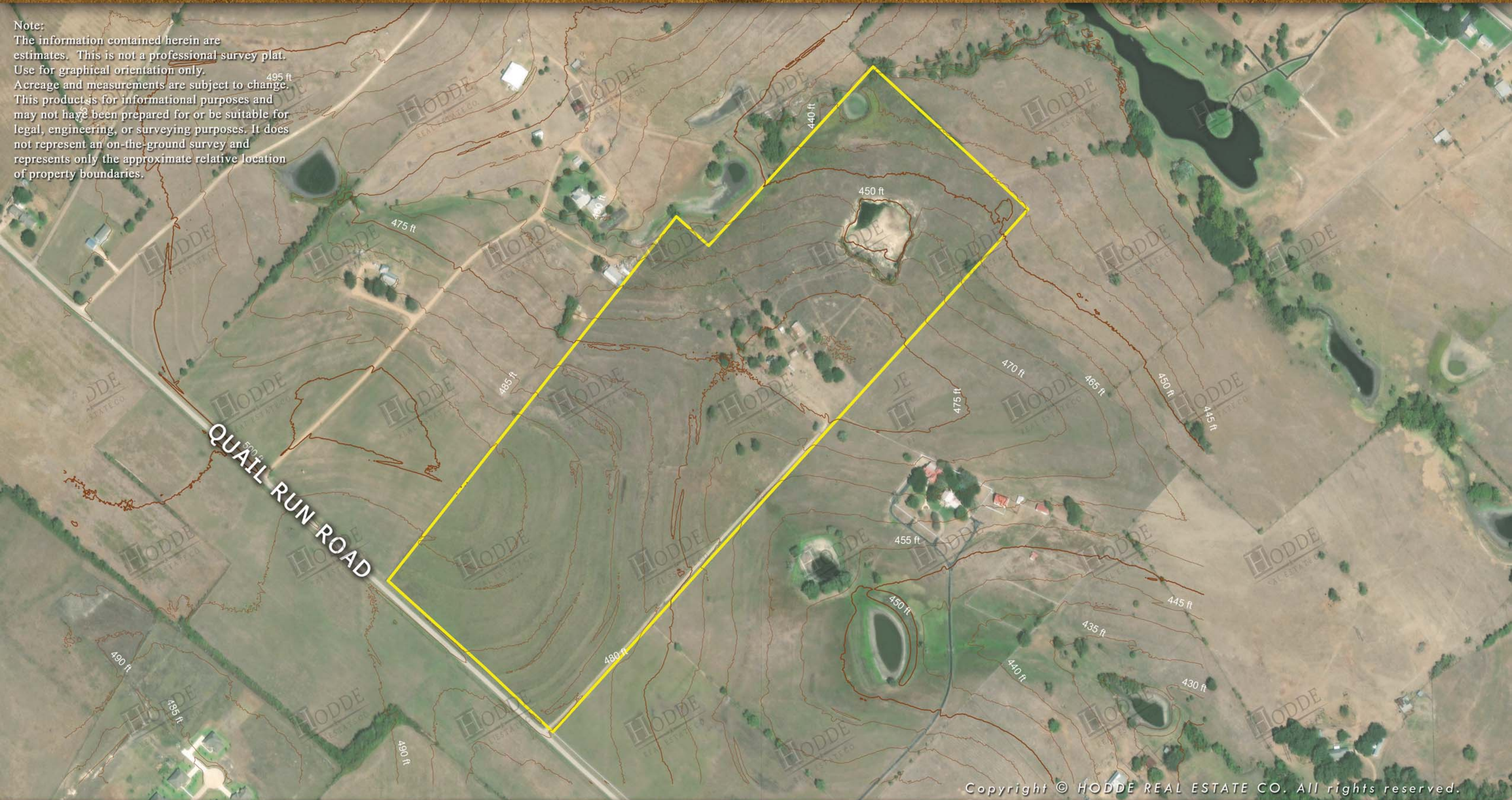
The information contained herein has been obtained from sources that Hodde Real Estate deem reliable; however, cannot guarantee its accuracy. Property is subject to prior sale or withdrawal from the market.



# AERIAL LAYOUT

## Note:

The information contained herein are estimates. This is not a professional survey plat. Use for graphical orientation only. Acreage and measurements are subject to change. This product is for informational purposes and may not have been prepared for or be suitable for legal, engineering, or surveying purposes. It does not represent an on-the-ground survey and represents only the approximate relative location of property boundaries.







The information contained herein has been obtained from sources that Hodde Real Estate deem reliable; however, cannot guarantee its accuracy. Property is subject to prior sale or withdrawal from the market.

